



10" POS Professional Monitor

# Overview

## Attach External Devices

The screen has a HDMI input for attaching external devices to run the screen.

## Commercial Grade

Designed for use in commercial applications this screen can run 24/7. No external buttons or controls to avoid tampering.

## Plug and Play

Plug and Play is the easiest and most simple way to upload content to the screen. Simply load images and videos on a USB stick, insert in the display. Your images and videos will now play in a continuous loop

## LED Backlight

Improves brightness and contrast as well as improving their lifespan and reducing their power consumption. Unlike other forms of light this technology is mercury free; making it even more eco-friendly. The panel and backlight have a lifespan in excess of 50,000 hours.

## Portrait/Landscape Orientation

The screen can be used in either a landscape or portrait orientation depending on your requirement.

## Power Over Ethernet

Power the screen using an Ethernet cable or the power cable provided.

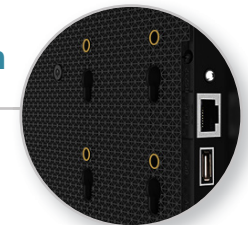


## RS-232 Control

Control, scale and customise your display over long and short distances using RS-232,

## Integrated Mounting Solution

The rear of the display includes an integrated and secure screw based mounting solution.





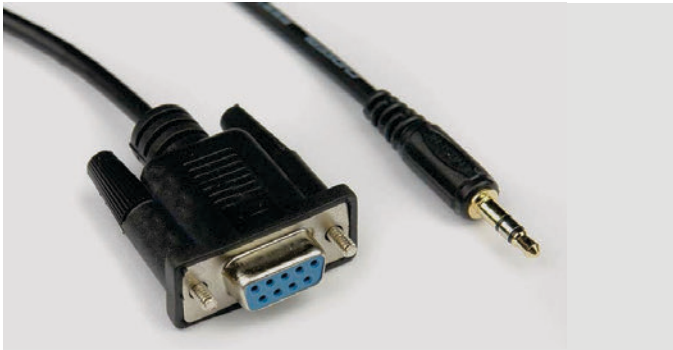
## Commercial Monitor

Built with commercial grade panel and components these displays are designed to run 24/7 in constant use, unlike domestic screens. They have a tempered glass frontage and an enclosure made from a light-weight polymer so they are ideal for shelf edge and POS displays. They also have a screwless design to achieve a seamless aesthetic and avoid tampering. The panel also has a lifespan of over 50,000 hours of continuous use. They can either be used in landscape or portrait orientation.



## HDMI Input

The monitor has a HDMI input so attaching external devices is easy thanks to its unmatched quality and ease of use. HDMI offers the best high definition audio and video quality on the market. HDMI is able to work with a huge variety of different products such as DVD players, media players, cameras and PCs.

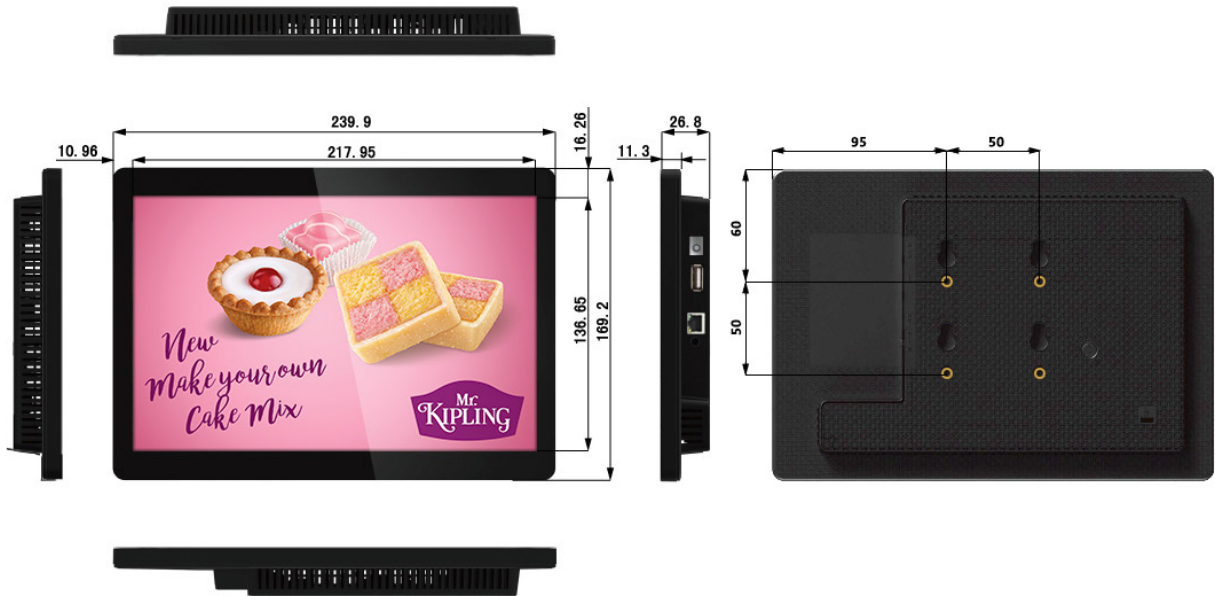


## RS-232 Control

Once your screen is connected via RS-232 you can control, scale and customise your display remotely over short and long distances.



## Technical Drawing:



<b>Panel</b>	Display Size	10 inch
	Resolution	1280x800
	Display Area (mm)	217.95x136.65
	Aspect Ratio	16:10
	Brightness (cd/m <sup>2</sup> )	350
	Colour	16.7M
	Colour Depth	10 Bit
	Viewing Angle	178°
	Contrast Ratio	800:1
	Lifespan	50,000 Hours
<b>Audio</b>	Speaker Output	1.5W, 8Ω
<b>Mechanical</b>	Input Voltage	AC110~240V (50Hz~60Hz)
	Unit Size (WxHxD mm)	239.9x169.2x26.8
	Bezel Size (mm)	Top/Bottom:16.26 Left/Right:10.96
<b>Environmental</b>	Operating Temperature	0°C to 50°C
	Storage Temperature	-30°C to 60°C
	Operating Humidity	10% to 80%
	Storage Humidity	5% to 95%